



**KRON M4 - 10010 Basic:** Rabbit/snail

**KRON M4 - 10011 Standard:** Rabbit/snail, DSC, IN-SLOW, RPM +/-, motor on/off

**KRON M4(+1) - 10012 Plus:** 5 functions, rabbit/snail, DSC, IN-SLOW, RPM +/-, motor on/off, lights on/off, load indication 90%/100%



**ZEUS2 M4 - 10013 Standard:** Rabbit/snail, DSC, IN-SLOW, RPM +/-, motor on/off

**ZEUS2 M4 - 10014 Plus:** Rabbit/snail, DSC, IN-SLOW, RPM +/-, motor on/off, lights on/off, load indication 90%/100%



**ZEUS2 B2 - 10015 Standard:** Rabbit/snail, DSC, IN-SLOW, RPM +/-, motor on/off

**ZEUS2 B2 - 10016 Plus:** Rabbit/snail, DSC, IN-SLOW, RPM +/-, motor on/off, lights on/off, load indication 90%/100%



**ZEUS2 M5 - 10017 Standard:** Rabbit/snail, DSC, IN-SLOW, RPM +/-, motor on/off

**ZEUS2 M5 - 10018 Plus:** Rabbit/snail, DSC, IN-SLOW, RPM +/-, motor on/off, lights on/off, load indication 90%/100%



**ZEUS2 M6 - 10019 Standard:** Rabbit/snail, DSC, IN-SLOW, RPM +/-, motor on/off

**ZEUS2 M6 - 10020 Plus:** Rabbit/snail, DSC, IN-SLOW, RPM +/-, motor on/off, lights on/off, load indication 90%/100%

**ZEUS2 M6(+2) - 10021 Standard:** 7 functions, rabbit/snail, DSC, IN-SLOW, RPM +/-, motor on/off

**ZEUS2 M6(+2) - 10022 Plus:** Rabbit/snail, DSC, IN-SLOW, RPM +/-, motor on/off, lights on/off, load indication 90%/100%



**THOR2 M6 - 10023 Standard:** Rabbit/snail, DSC, IN-SLOW, RPM +/-, motor on/off

**THOR2 M6 - 10024 Plus:** Rabbit/snail, DSC, IN-SLOW, RPM +/-, motor on/off, lights on/off, load indication 90%/100%



**THOR2 B3 - 10025 Standard:** Rabbit/snail, DSC, IN-SLOW, RPM +/-, motor on/off

**THOR2 B3 - 10026 Plus:** Rabbit/snail, DSC, IN-SLOW, RPM +/-, motor on/off, lights on/off, load indication 90%/100%



**THOR2 M8 - 10027 Standard:** Rabbit/snail, DSC, IN-SLOW, RPM +/-, motor on/off

**THOR2 M8 - 10028 Plus:** Rabbit/snail, DSC, IN-SLOW, RPM +/-, motor on/off, lights on/off, load indication 90%/100%



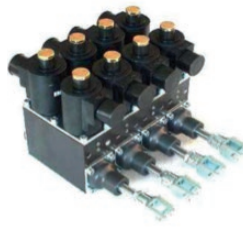
**THOR2 M9 - 10029 Plus:** 10 functions, rabbit/snail, DSC, IN-SLOW, RPM +/-, motor on/off, lights on/off, load indication 90%/100%

---

## TYPES OF ACTUATOR BLOCK

4 functions monoblock with fix 40mm spacing.

4 to 10 functions modular block with several available spacing: 38, 40, 42, 44, 46, 48, 50mm (for custom spacing, please contact your supplier).



**MONOBLOCK (4F, 40mm spacing)**



**MODULAR (4-10F, 38-50mm spacing)**

---

## OIL SUPPLY

the block of actuators can get the oil supply from a POWER PACK or from a counter pressure valve+filter.



**POWER PACK**



**M1002**



**M1031**

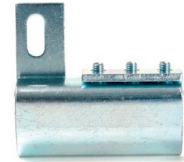
**COUNTER PRESSURE VALVE + FILTER**

---

## INCLUDED IN THE HYDRA KIT

### THE CLAMPS FOR THE TRANSMISSION RODS

The clamps to be fixed to the transmission rods of the crane avoid welding whatsoever and render the system independent.



---

### FITTINGS AND HYDRAULIC PIPING

Fittings and connecting pipes to the control unit.

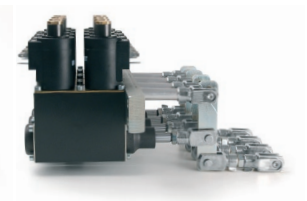
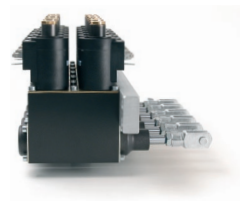


---

## OPTIONS

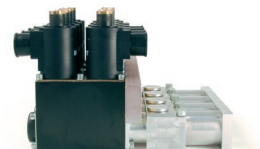
### STROKE EXTENSION KIT

The standard actuator stroke is +/- 13 mm from the center and fits most part of the hydraulic distributors present in the market. A kit that can extend the piston's stroke up to +/- 20mm is available for special needs.



### ADAPTER KIT

It is possible to connect the actuators APT 400 directly to the proportional manual distributors Walvoil SD6-SD8, Galtech and Parker, thanks to the dedicated flanging kit. This configuration involves the removal of the transmission bars.



### TRANSMITTER-RECEIVER CABLE CONNECTION

Transmitter and receiver can be connected together with a 15 or 30m cable. Radio modules are then turned off.



---

## ACCESSORIES

### THE BY-PASS VALVE

This valve is required to make the crane comply with CE regulations. In case you are lacking it, it is available in our product catalog.

